



Search

/

Join the Repair Community - [Create Account](#)

... > HP ENVY 15 Series > HP Envy TouchSmart 15t-j000

Parts

Guides

Answers

Edit



HP Envy TouchSmart 15 CMOS Battery Replacement



Robert Patterson and 2 other contributors

Last updated on Nov 23, 2015

7.9K

0

1

1



5 - 10 minutes



Easy

What you need

Tools



Metal Spudger



iFixit Opening Tool



Phillips #0 Screwdriver

[Go to step 1](#) ↓

Introduction

Upon boot up, the computer may read a "CMOS checksum error," or date and time keep getting reset. If this is the error you are receiving you should replace your CMOS Battery.

Step 1 Battery




- Press the battery release tab and the battery will pop up.

 Add a comment

Step 2




- Remove the battery from the laptop, it will come out easily.

 Add a comment

Step 3 Accessory Plate



- Remove the single screw holding the accessory plate. This is a PH0 2.0x2.5 screw.

 Add a comment

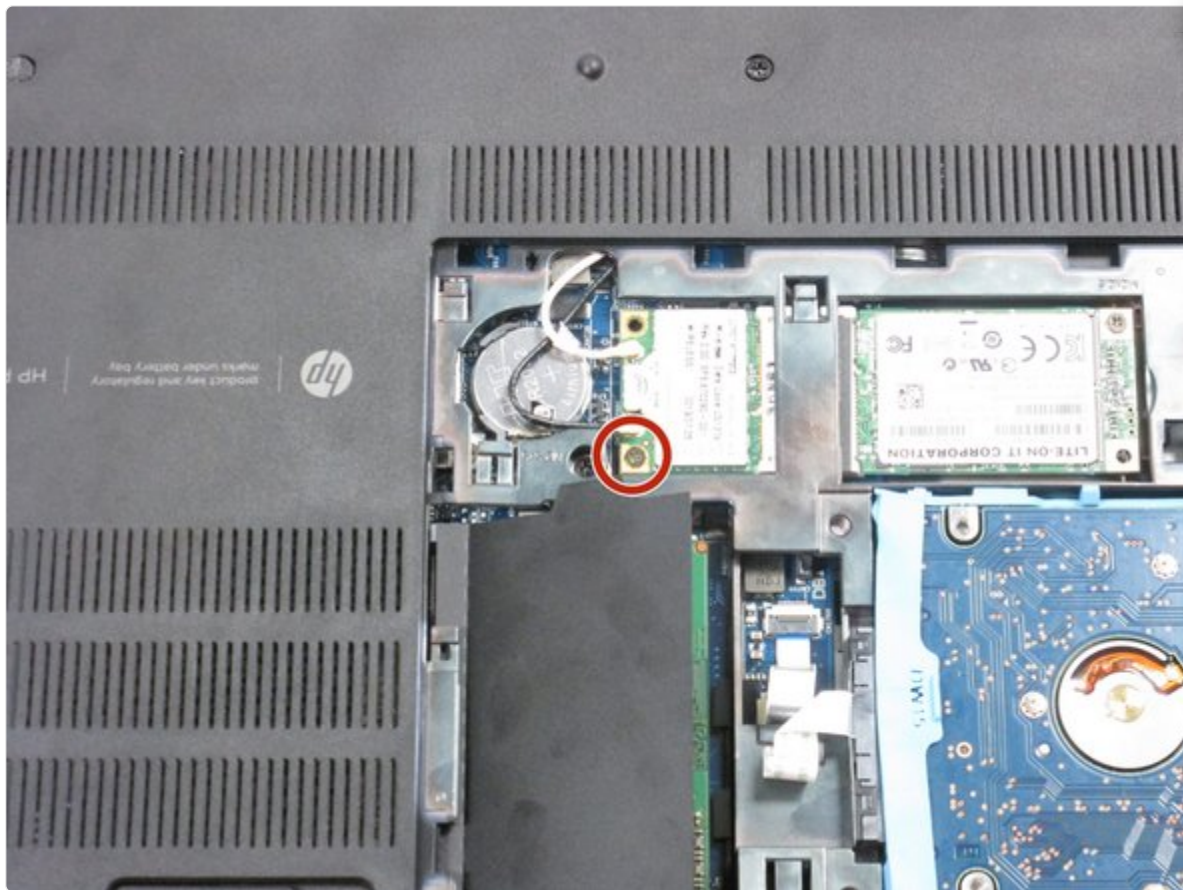
Step 4




- Pry the accessory plate up from the back of the laptop by applying force upwards where the screw was removed.

 Add a comment

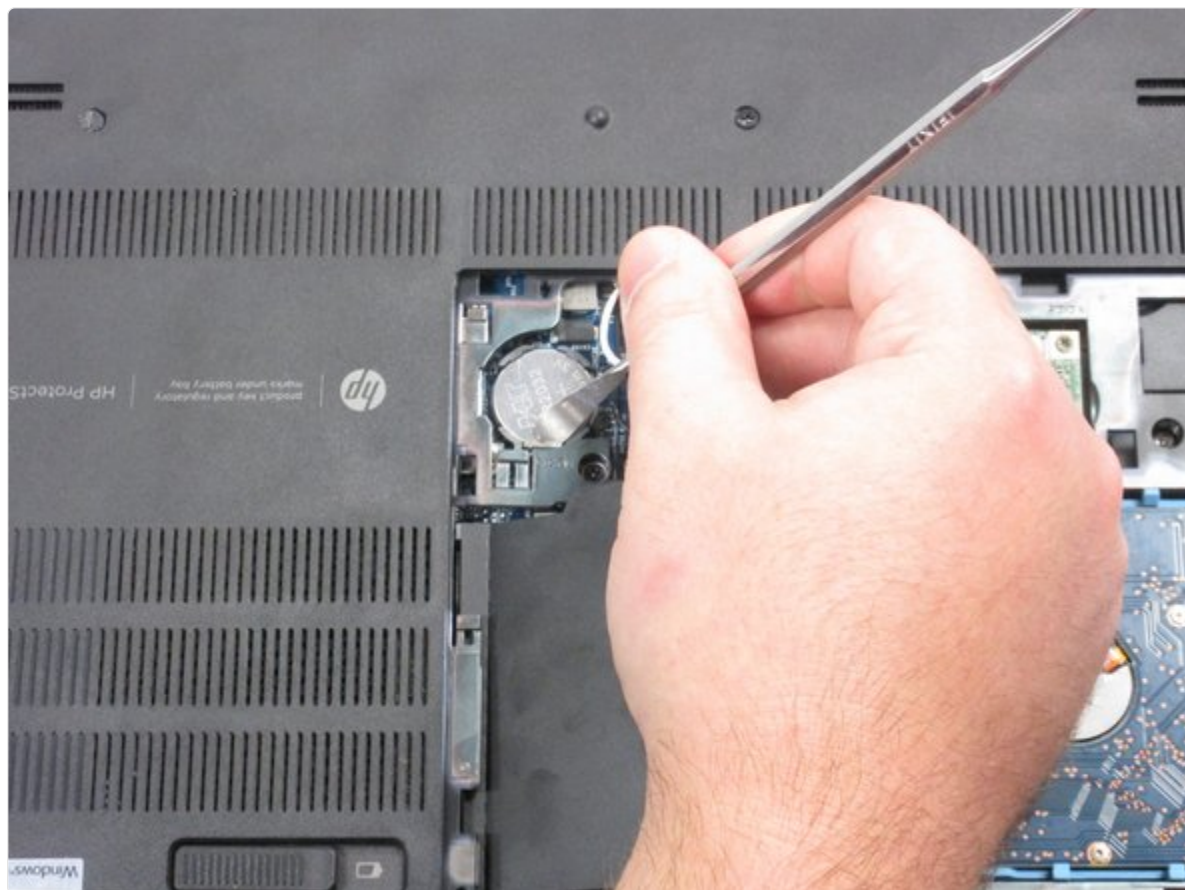
Step 5 CMOS Battery




- Remove the screw from the wireless adapter with a PH0 screwdriver then move the adapter out of the way to access the CMOS battery.

 Add a comment

Step 6



- Use a plastic or metal spudger to release the CMOS battery from the clips.

 Add a comment

Step 7



- Remove the battery from the device.

 Add a comment

CONCLUSION

To reassemble your device, follow these instructions in reverse order.

✓ Give the author +30 points!

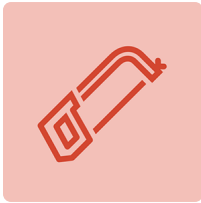
One other person completed this guide.

Gear Up For Future Repairs

[Shop all](#)

Author

with 2 other contributors



**Robert
Patterson**

Member since:
09/04/15

1,472 Reputation
5 Guides authored

Badges: **22**



+19 more badges


Team



**USF Tampa, Team
2-6, Sullivan Fall
2015**

USFT-SULLIVAN-F15S2G6
4 Members
10 Guides authored

0 GUIDE COMMENTS

 Add a comment

Add Comment

Post comment

 View Statistics:	Past 24 Hours: 1	Past 7 Days: 7	Past 30 Days: 19	All Time: 7,910
--	----------------------------	--------------------------	----------------------------	---------------------------